

- Notes:
- 1) Your file size should be 11.25" x 17.25" with bleeds or 11.00" x 17.00" without bleeds.

2) Keep all critical design elements and text inside the safe area

3) Do not put anything important in the bleed area

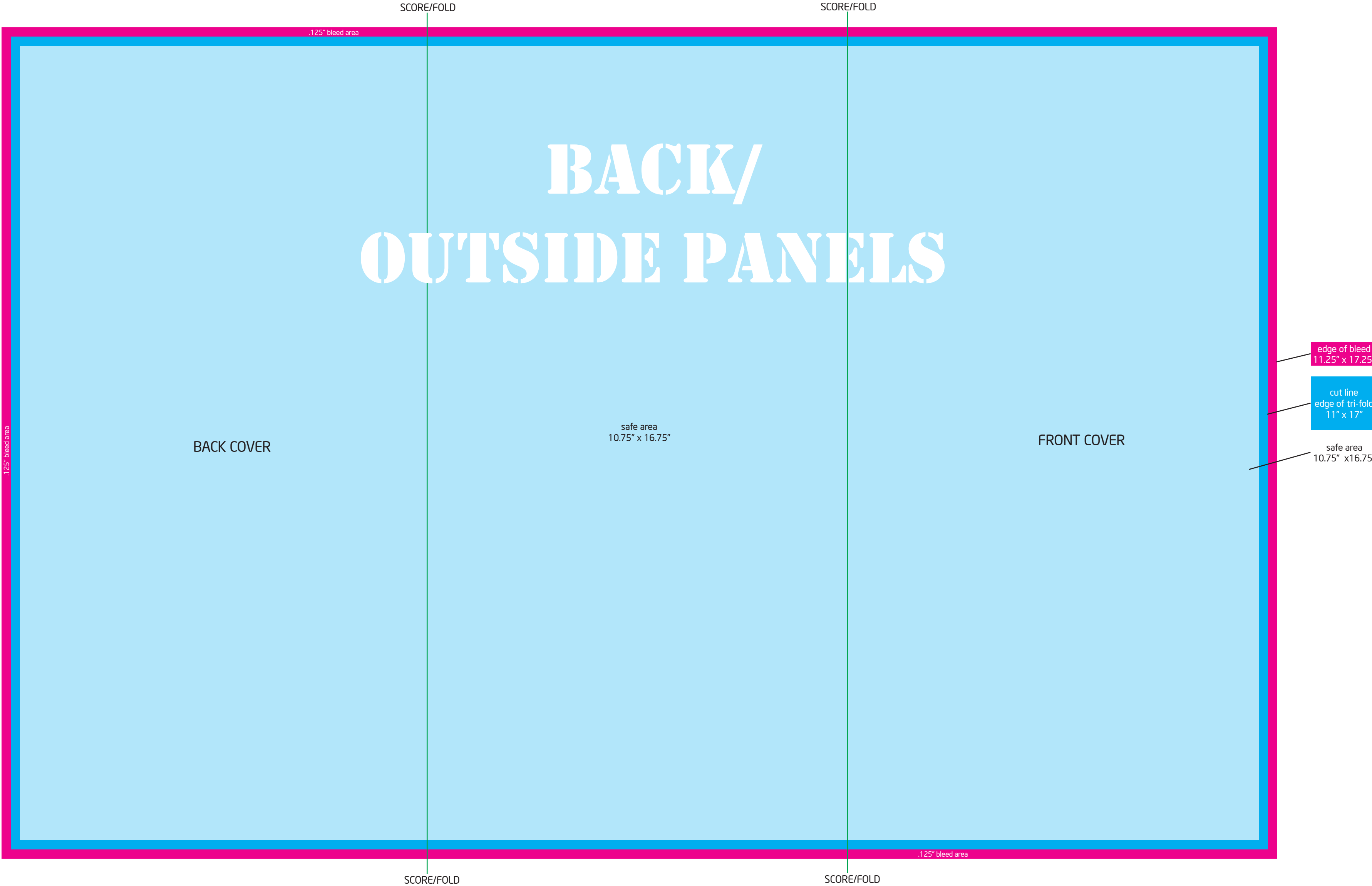
4) The edge of the card is cut outside the safe area through the bleed

5) Do not add any cropmarks or bleed marks

6) Do not step & repeat, we only need a single position, front and back.

7) Hi resolution print PDF' files (300 dpi) are preferred.

8) Flatten all transparencies. Convert all fonts to outlines.



- Notes:
- 1) Your file size should be 11.25" x 17.25" with bleeds or 11.00" x 17.00" without bleeds.

2) Keep all critical design elements and text inside the safe area

3) Do not put anything important in the bleed area

4) The edge of the card is cut outside the safe area through the bleed

5) Do not add any cropmarks or bleed marks

6) Do not step & repeat, we only need a single position, front and back.

7) Hi resolution print PDF' files (300 dpi) are preferred.

8) Flatten all transparencies. Convert all fonts to outlines.